



G&G TECHNOLOGIES, INC.

SINGLE-USE MIXERS AND TOTES



Liquid Storage Solutions for the Life-Sciences

G&G Technologies boasts a wide array of Single-Use Mixers and Totes for liquid storage, mixing, and temperature control. Single-Use Mixers are becoming the industry standard alternative to expensive cleaning processes. Whether your application is buffer and media prep, product formulation, or general storage, find out how a G&G Technologies Mixer or Tote can meet your fluid handling needs.

6 Grandview St.
Coventry, RI 02816
401-295-4000
info@ggtechnologies.com
www.ggtechnologies.com

Sensing and Controls

G&G Technologies' Liquid Storage containers feature a broad array of options for sensing and control. Optional accessories include Temperature Control and Monitoring, pH Monitoring, DO Monitoring, Conductivity Monitoring, Pressure Monitoring, and Load Sensing.

Our Mixers and Totes are available as turn-key solutions or may be integrated with on-site SCADA systems, allowing for seamless automation and real-time monitoring of critical process parameters. This level of integration enhances operational efficiency, quality control, and regulator compliance in the life sciences industry.

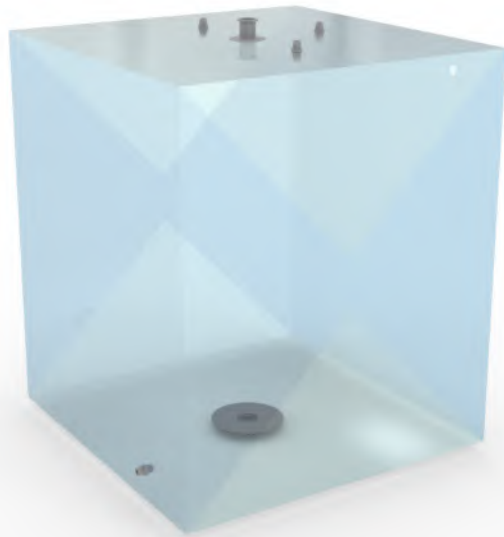


Features and Benefits

- An array of sizes from 10L up to 2000L
- Magnetically Driven Mixer Impellers
- 20 to 1 Turn-Down Ratio
- Robust Process Monitoring and Control
- Stainless Steel Construction

Superior Bag Technology

Our single-use bags are produced in an ISO Class 7 facility in adherence to ISO 9001 Standards. The 5-Layer, 325 Micron thick film complies with USP Class VI and ISO 10993 regulations, ensuring suitability for life sciences applications. Our 3D Bags are available with a variety of options for fittings, powder ports, sensor ports, single-use sensors, and top-mount or bottom-mount mixers.



Liquid Storage Vessels



Single-Wall Mixers and Totes

- 20 Liters to 2000 Liters
- Optional Bottom Mount Mixer
- Optional Load Cells



Jacketed Mixers and Totes

- 20 Liters to 1000 Liters
- Optional Bottom Mount Mixer
- Optional Load Cells



Jacketed Vessel with TCU

- 100 Liters to 1000 Liters
- Temperature Control Module
- Load Cells



Jacketed Vessel with Agitator

- 100 Liters to 1000 Liters
- Temperature Control Modules
- Load Cells



Polymer Vessel

- 100 Liters to 1000 Liters
- Polymer Storage Tank
- Load Cells



Powder Mixing Vessel

- 100 Liters to 1000 Liters
- Bottom Mount Mixer
- Load Cells



Top-Mount Mixer

- 100 Liters to 1000 Liters
- Temperature Control Modules
- Load Cells



Pumping and Mixing Stations

- 20 to 100 Liters
- Integral Diaphragm Pump and Controls
- Pump up to 20 Liters per Minute

Options and Accessories



Port Hole

- 8" Diameter Port Hole for Vessel Access
- Polycarbonate



Bottom Port Hole

- 6" Diameter Port Hole for Vessel Access
- Magnetic Assembly



Vessel Cover

- Protective Polycarbonate Cover
- UV Resistant



Access Door

- Wide Access to Vessel Interior
- Cam Lock Latches
- Stainless Steel Construction



Sensor Ports

- Access to Probe Connections
- Supports Probes and Tubing
- Stainless Steel Construction



Temperature Control Unit

- Oil, Steam, Hot or Cold Water, or Coolant
- up to 150 PSI
- Smart Temperature Control



Sensor Transmitters

- pH, Conductivity, Dissolved Oxygen
- Facility Integration
- Digital Read-Out



Peristaltic Pumps

- Integral Motor and Controls
- Pump up to 16 Liters Per Minute



Description	Vessel Size			
	20L	50L	100L	200L
Materials of Construction				
Tank	304L Stainless Steel 316L Stainless Steel (Optional)	304L Stainless Steel 316L Stainless Steel (Optional)	304L Stainless Steel 316L Stainless Steel (Optional)	304L Stainless Steel 316L Stainless Steel (Optional)
Casters	304L Stainless Steel Polyurethane	304L Stainless Steel Polyurethane	304L Stainless Steel Polyurethane	304L Stainless Steel Polyurethane
Dimensions				
LxWxH Single Wall	12"x12"x30" (305 x 305 x 762 mm)	15"x15"x40" (381 x 381 x 1017 mm)	18"x18"x45" (457 x 457 x 1143 mm)	23"x23"x52" (585 x 585 x 1320 mm)
LxWxH Jacketted	14"x14"x30" (355 x 355 x 762 mm)	18"x18"x40" (457 x 457 x 1017 mm)	21"x21"x45" (533 x 533 x 1143 mm)	25"x25"x52" (635 x 635 x 1320 mm)
Minimum Working Volume	1L	2.5L	5L	10L
Maximum Jacket Pressure	150	150 psi	150 psi	150 psi
Heat Transfer Area (sq. ft) (sq. m)	3.7 sq ft 0.3 sq m	6.8 sq ft 0.6 sq m	10.7 sq ft 1.0 sq m	17 sq ft 1.6 sq m
Operating Temperature	4-60 deg C (Non Condensing Environment)	4-60 deg C (Non Condensing Environment)	4-60 deg C (Non Condensing Environment)	4-60 deg C (Non Condensing Environment)

Description	Vessel Size			
	500L	650L	1000L	2000L
Materials of Construction				
Tank	304L Stainless Steel 316L Stainless Steel (Optional)	304L Stainless Steel 316L Stainless Steel (Optional)	304L Stainless Steel 316L Stainless Steel (Optional)	304L Stainless Steel 316L Stainless Steel (Optional)
Casters	304L Stainless Steel Polyurethane	304L Stainless Steel Polyurethane	304L Stainless Steel Polyurethane	304L Stainless Steel Polyurethane
Dimensions				
LxWxH Single Wall	30"x30"x63" (762 x 762 x 1600 mm)	33"x33"x67" (838 x 838 x 1702 mm)	37"x37"x73" (940 x 940 x 1854 mm)	46"x46"x87" (1168 x 1168 x 2209 mm)
LxWxH Jacketted	33"x33"x63" (838 x 838 x 1600 mm)	35"x35"x67" (889 x 889 x 1702 mm)	40"x40"x73" (1016 x 1016 x 1854 mm)	48"x48"x87" (1220 x 1220 x 2209 mm)
Minimum Working Volume	25L	33L	50L	100L
Maximum Jacket Pressure	150 psi	150 psi	150 psi	150 psi
Heat Transfer Area	31.5 sq ft 2.9 sq m	37.5 sq ft 3.5 sq m	49.6 sq ft 4.6 sq m	78.5 sq ft 7.3 sq m
Operating Temperature	4-60 deg C (Non Condensing Environment)	4-60 deg C (Non Condensing Environment)	4-60 deg C (Non Condensing Environment)	4-60 deg C (Non Condensing Environment)

Contact G&G Technologies for customized solutions to your unique fluid handling challenges!

